

Mobile APP Quick Guide

Download

1.1 Download through the app market

Android: Google Play search for “SRNE Monitoring”

iOS: App Store search for “SRNE Monitoring”

1.2 Scan the following QR code to download



Connect

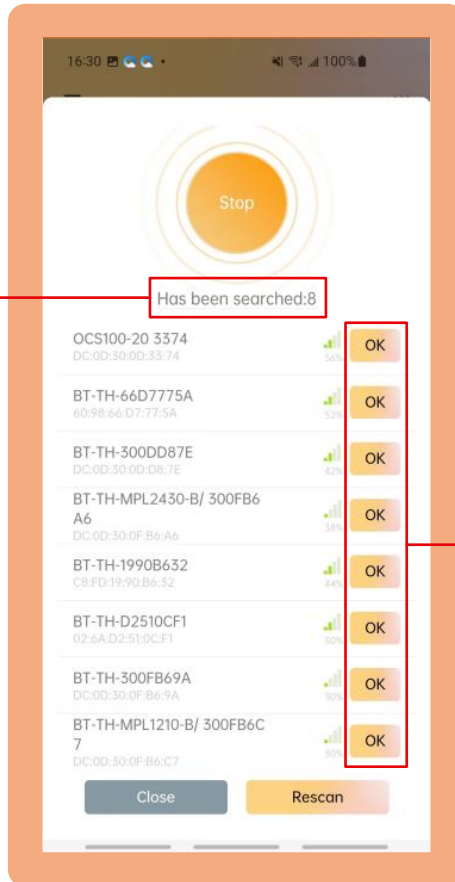
2.1 Open APP



Once downloaded, turn on your Bluetooth and open the app

Connect

2.2 Adding Bluetooth device



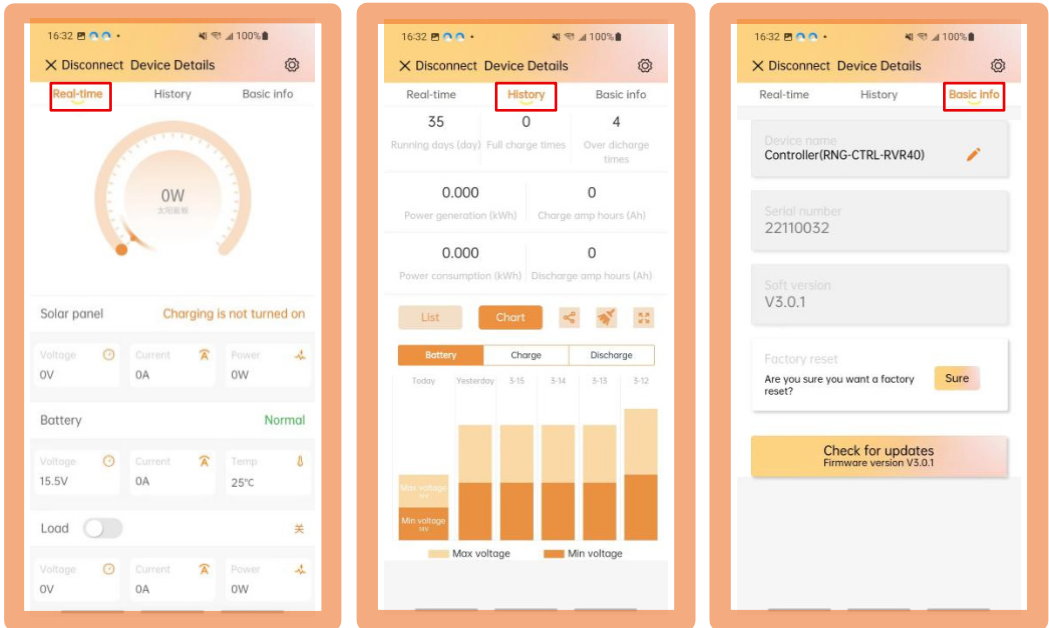
Search available
Bluetooth devices

Select device you
need to connect
and click “OK”

Add Bluetooth device from
search list

Connect

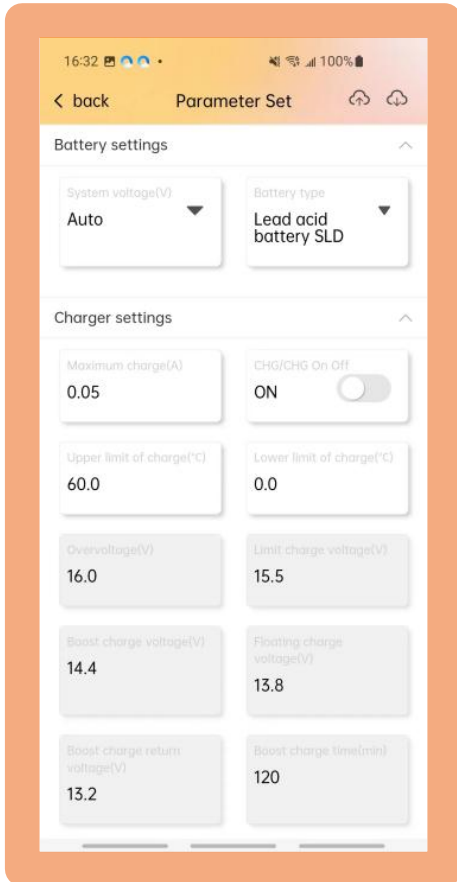
2.3 View device details



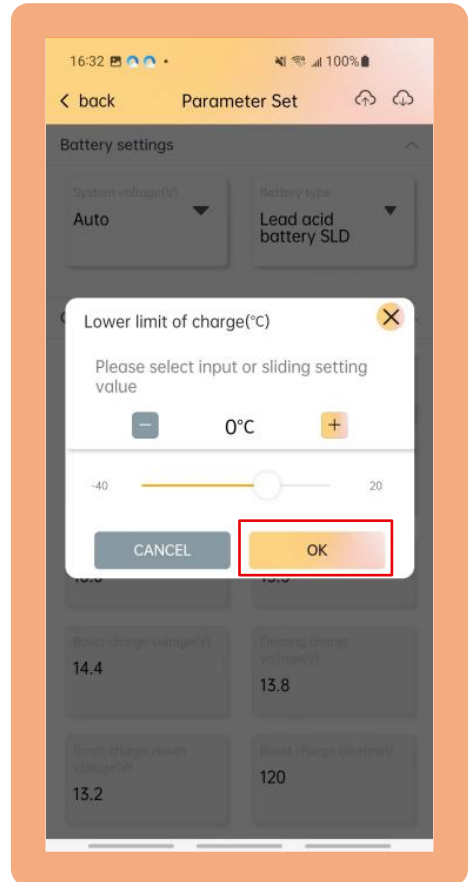
View real-time data, history data and basic information from your device

Setup

2.4 Setup Parameter Value



View parameters

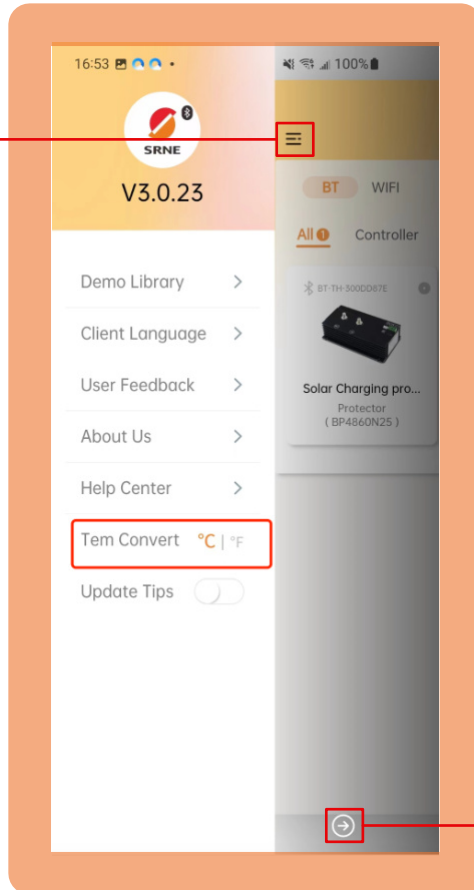


change parameter value and click “OK”

Other functions

3.1 Temperature Convert

Click it and go to other functions setting

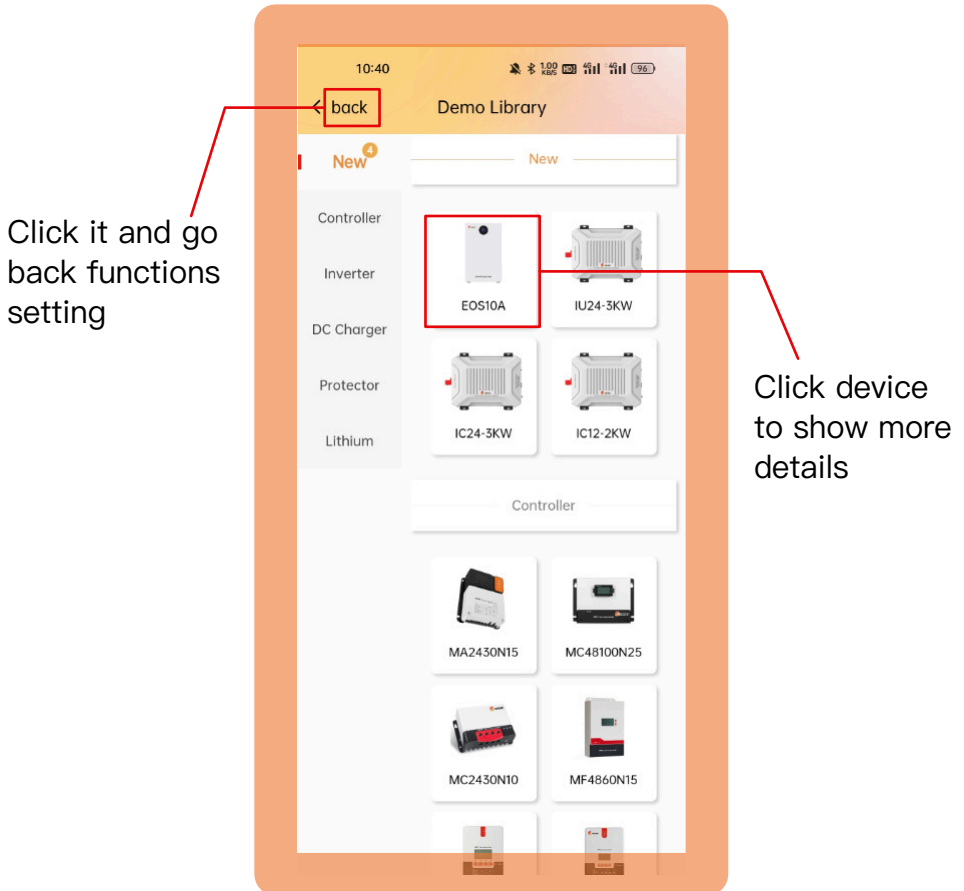


Click it and then go back home page

Switch between °F and °C

Other functions

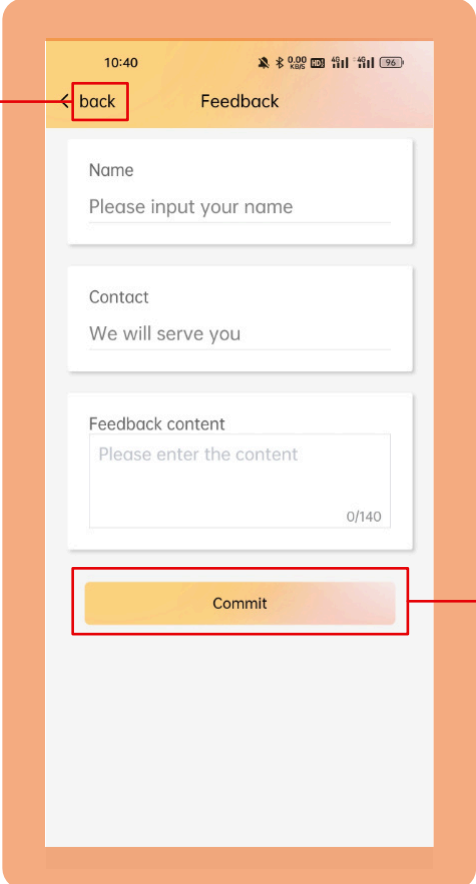
3.2 Demo Library



View product information of SRNE

Other functions

3.3 User Feedback



The image shows a mobile application interface for providing feedback. The screen is titled "Feedback" and has a status bar at the top showing the time 10:40 and various system icons. The form contains three sections: "Name" with the prompt "Please input your name", "Contact" with the prompt "We will serve you", and "Feedback content" with the prompt "Please enter the content" and a character count of "0/140". A yellow "Commit" button is at the bottom. Red boxes highlight the "back" button in the top left and the "Commit" button. Red arrows point from text annotations to these buttons.

Click it and go back functions setting

Click it to submit your feedback

Describe your feedback and we will serve you